

MSc
in
BME

M.Sc. Programme in Biomedical Engineering

Part time / Full time

Explore

Innovate

Care

Programme Highlights

- ❖ Highly interdisciplinary contents taught by experts from engineering, medicine and life sciences
- ❖ Specially designed for graduates with background in traditional engineering or science disciplines

Core Topics

Medical Imaging

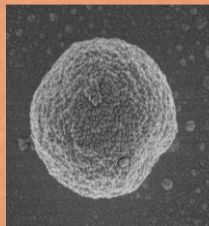
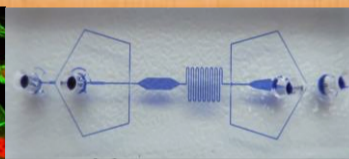
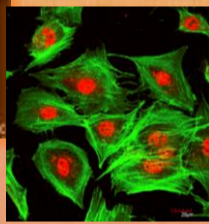
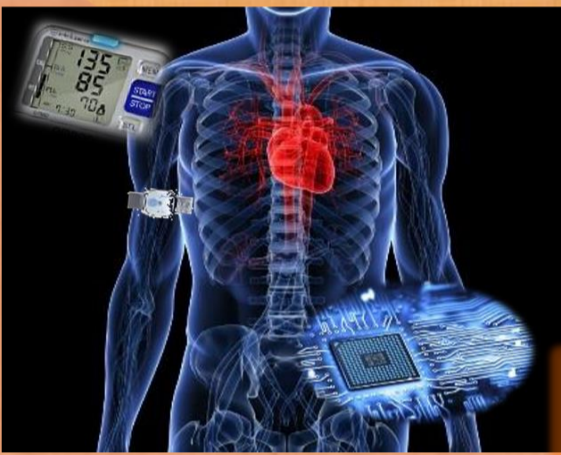
Tissue Engineering

Biomechanics and
Rehabilitation

Tele-medicine &
M-Healthcare

Medical Device
Regulatory Affairs

Bionanotechnology
& Biophotonics



Why BME?

- ❖ Engineering discipline of the 21st Century
- ❖ Healthcare has already become an important issue in Hong Kong and Mainland
- ❖ Technology has transformed the healthcare industry
- ❖ Ever-growing and ageing global population
- ❖ Rising demand for better life quality improvement

Who should attend?

Peoples who are interested in the health technology field:

- Medical & Healthcare Professionals
- Legal Professionals or Government officers supporting medical device regulatory affairs
- Sales personnel for healthcare products
- Medical equipment management personnel
- Clinical engineers in hospitals
- Healthcare service providers
- Scientists or Engineers
- Entrepreneurs

Information Session for 2019 intake

	Session 1	Session 2
Date:	17 November, 2018 (Sat)	23 February, 2019 (Sat)
Time:	2:30p.m.	
Venue:	Room 502, Wu Ho Man Yuen Building, CUHK	



For admission procedures, programme details as well as registration for information sessions, please visit <http://www.bme.cuhk.edu.hk/new/msc.php>

